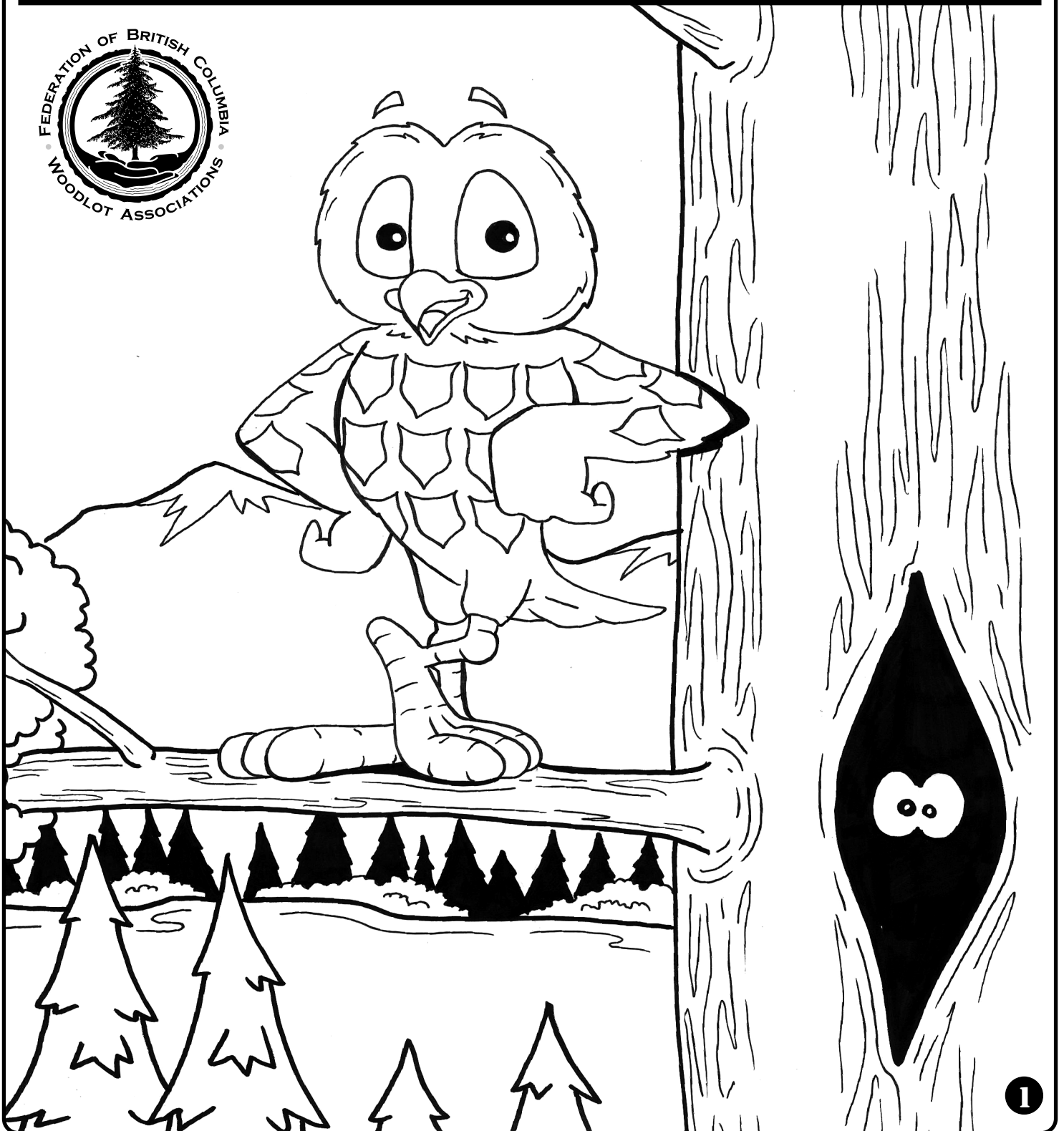


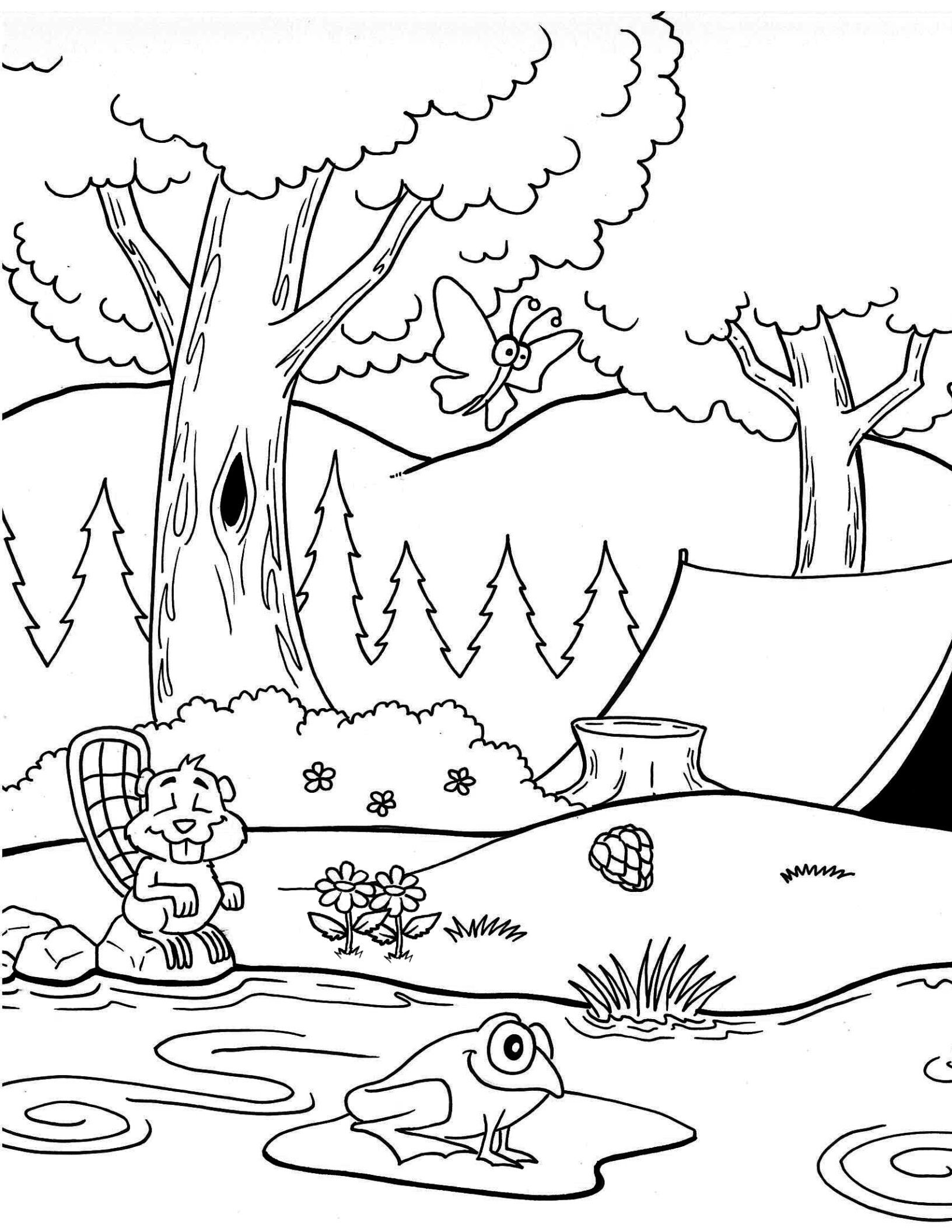


OLLIE'S WOODLOT ADVENTURES



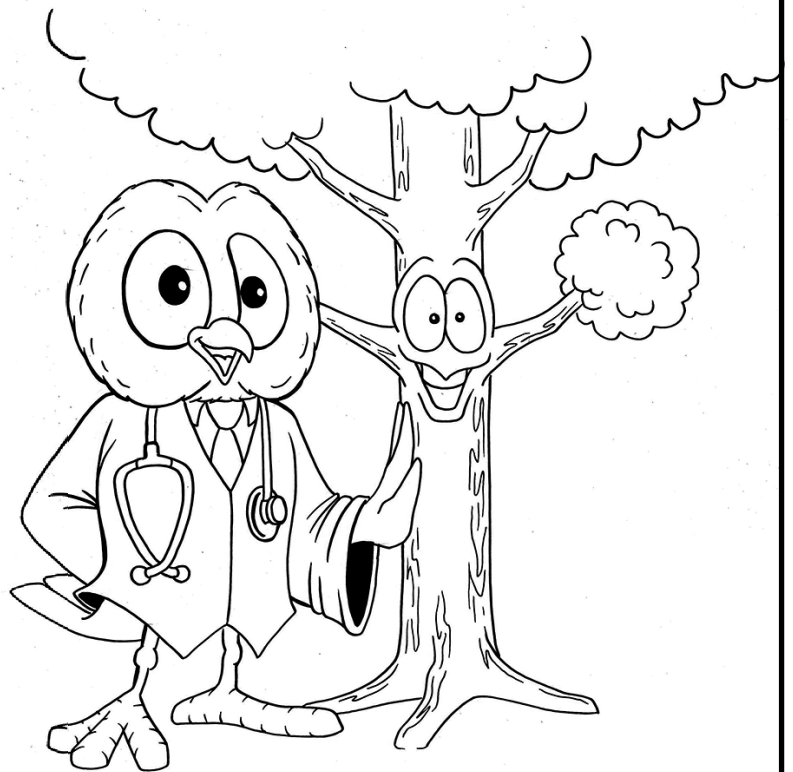
Ollie the owl lives in a forest in British Columbia, Canada. Ollie is lucky as over half of the province is forested. A forest is a plant community mostly made up of trees with other plants growing alongside an animal community. It is also a place where people work and play. Ollie's adventures take you to a woodlot licence, BC's smallest public managed forest, where you will learn about trees and how a forest is managed sustainably.





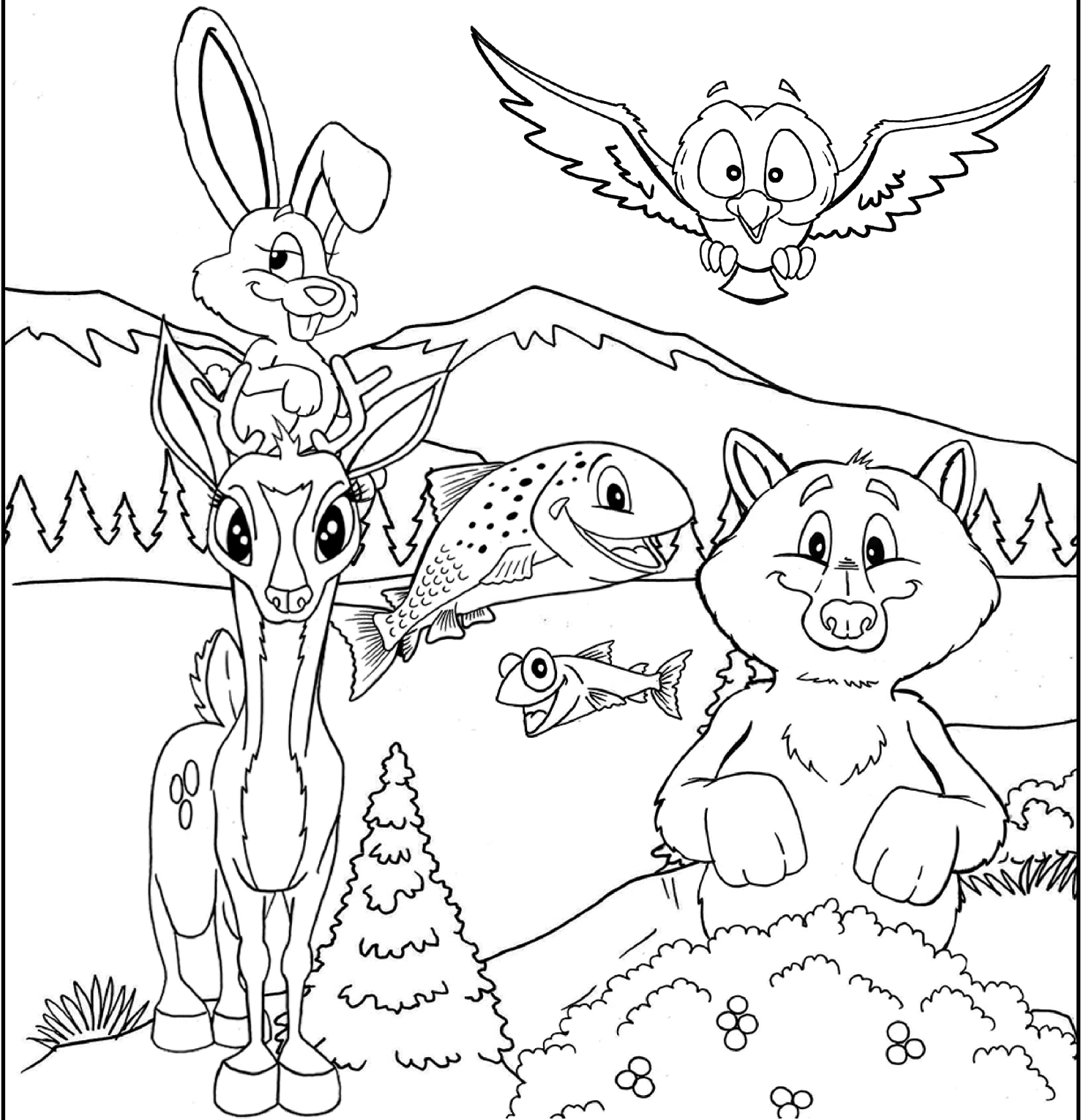


FOREST MANAGEMENT



Managing a forest is a big job. When managing a forest there are many resources to consider such as wildlife and its habitat, fish and streams, cultural heritage resources such as berries, scenic beauty and recreation.

ECOSYSTEM



The forest is an ecosystem - a system of soil, water and air which supports communities of plants and animals. These must be managed along with the other resources.

TREES

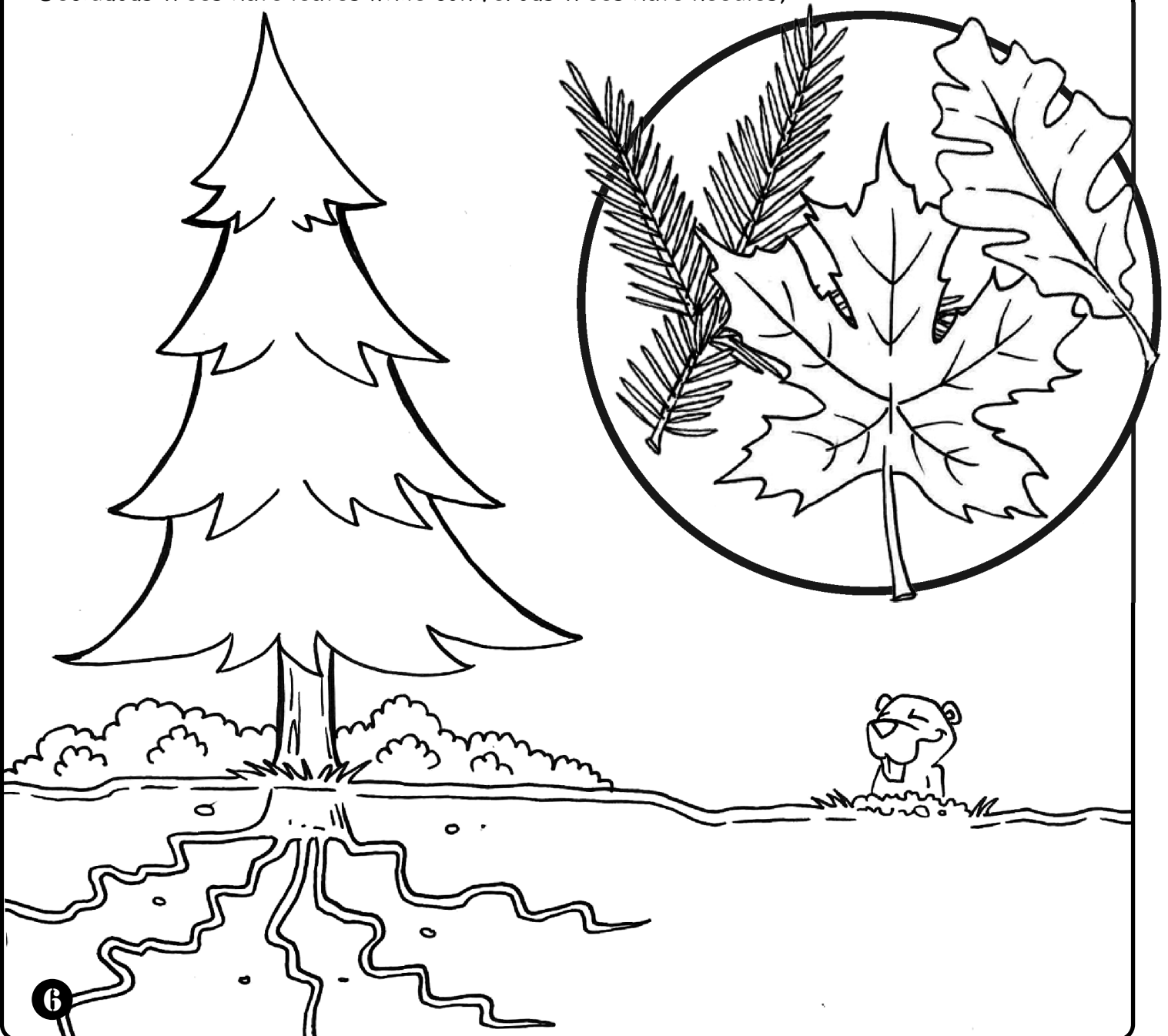
The tree is the main forest resource. It has three main parts.

Crown - green upper part where the tree makes its food. It includes branches, leaves or needles and cones or fruits.

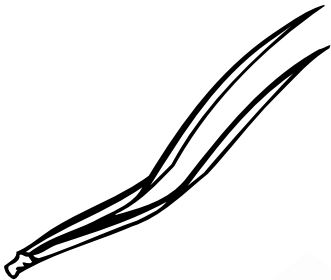
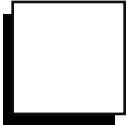
Trunk - the strong middle part that supports the tree.

Roots - anchors the tree in the ground. Water and minerals from the soil are absorbed through the root hairs.

Deciduous trees have leaves while coniferous trees have needles,

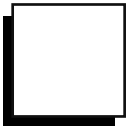


IDENTIFYING TREES



There are three ways to identify a coniferous tree - by its needles, cones and bark.

Match the pictures of the tree needles with the descriptions.



1. **FIR TREE - NEEDLES ARE SOFT AND FLAT**

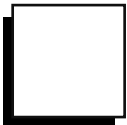
2. **CEDAR TREE - NEEDLES ARE FLAT AND SCALE-LIKE**

3. **WESTERN LARCH TREE - BUNCHES OF SHORT NEEDLES**

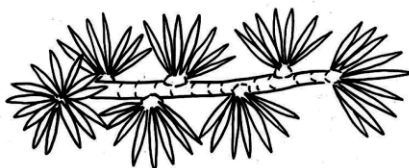
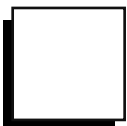


4. **LODGEPOLE PINE TREE - NEEDLES ARE IN BUNCHES OF 2**

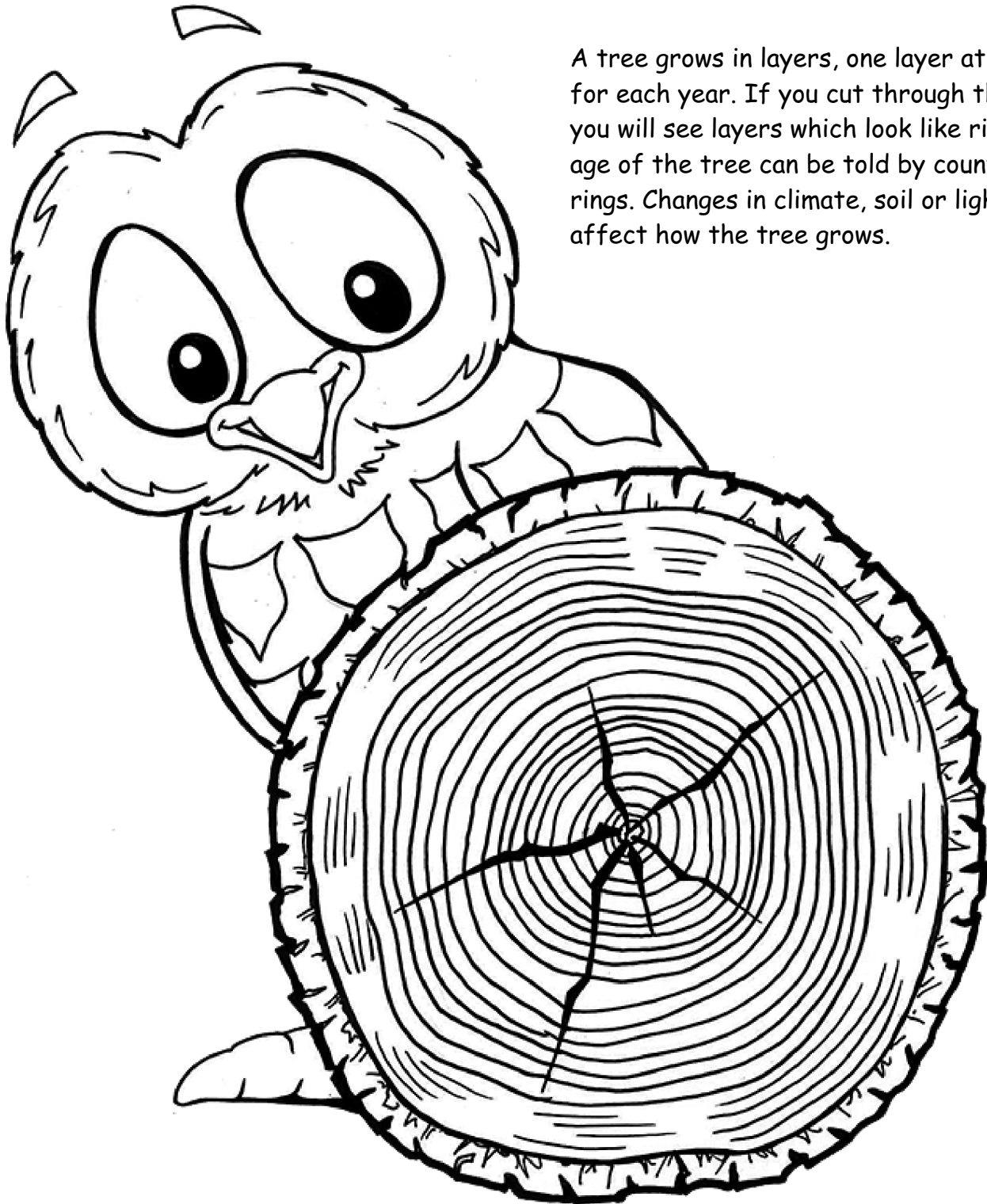
5. **SPRUCE TREE - NEEDLES ARE STIFF AND SHARP**



Did you know that larch trees lose their needles in the fall?



HOW A TREE GROWS



A tree grows in layers, one layer at a time for each year. If you cut through the trunk, you will see layers which look like rings. The age of the tree can be told by counting the rings. Changes in climate, soil or light will affect how the tree grows.

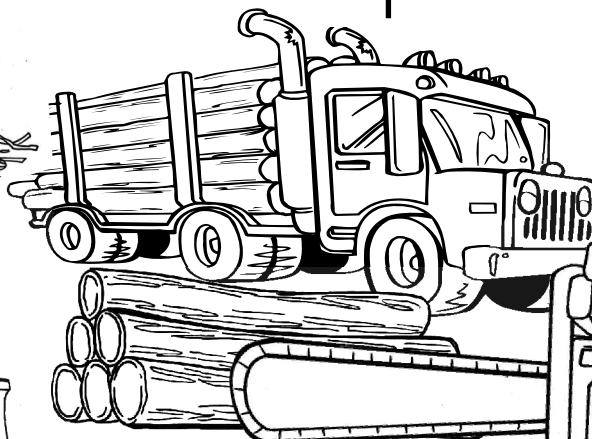
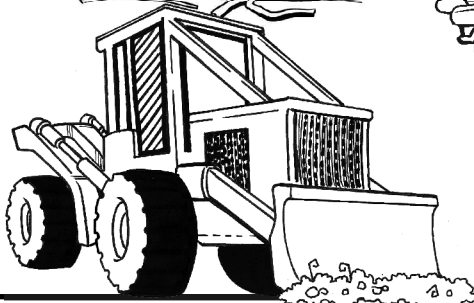
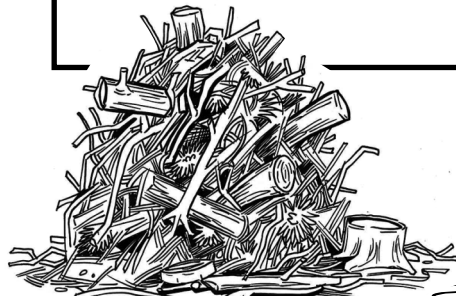
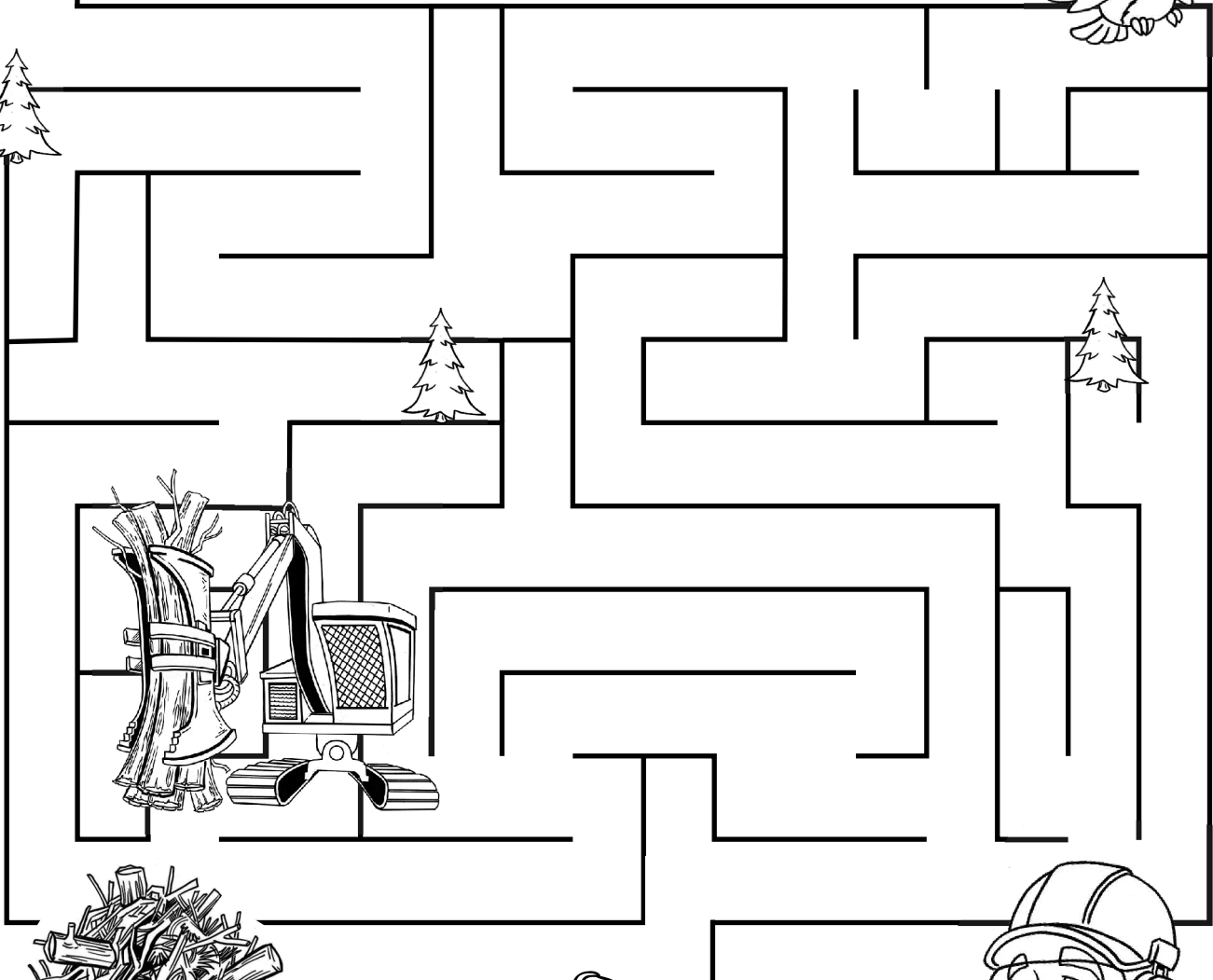
QUESTION: What happens when you put a nail in a tree?

A-MAZE-ING LOGGING

Only a small part of a woodlot licence is logged each year. There are many types of equipment used in logging depending on the job - Feller-Buncher or chainsaw for cutting down trees, Skidder for bringing the trees to the road, Processor or chainsaw for taking off the limbs and cutting logs, and a logging truck for hauling them away.



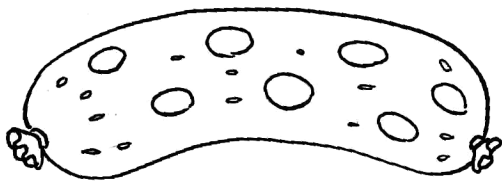
HELP OLLIE FIND THE LOGGER ON THE WOODLOT.



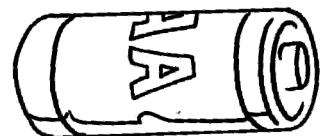
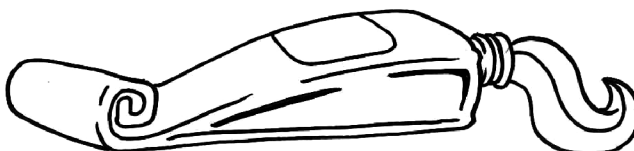
WORD SEARCH

M	S	L	I	P	S	T	I	C	K	P	T
I	A	B	C	O	B	A	R	Q	A	L	O
G	U	P	I	R	M	K	T	H	O	T	O
R	S	U	L	X	I	A	F	R	Y	H	T
M	A	T	S	E	E	K	A	R	M	A	H
E	G	L	Q	U	S	O	S	O	T	I	P
P	E	N	C	I	L	Y	P	A	T	R	A
A	O	B	A	T	T	E	R	I	E	S	S
P	R	S	P	A	F	E	I	U	M	P	T
E	X	N	L	E	L	N	N	M	P	R	E
R	X	Y	R	A	G	E	N	I	V	A	T
T	V	I	N	T	U	P	O	N	D	Y	S

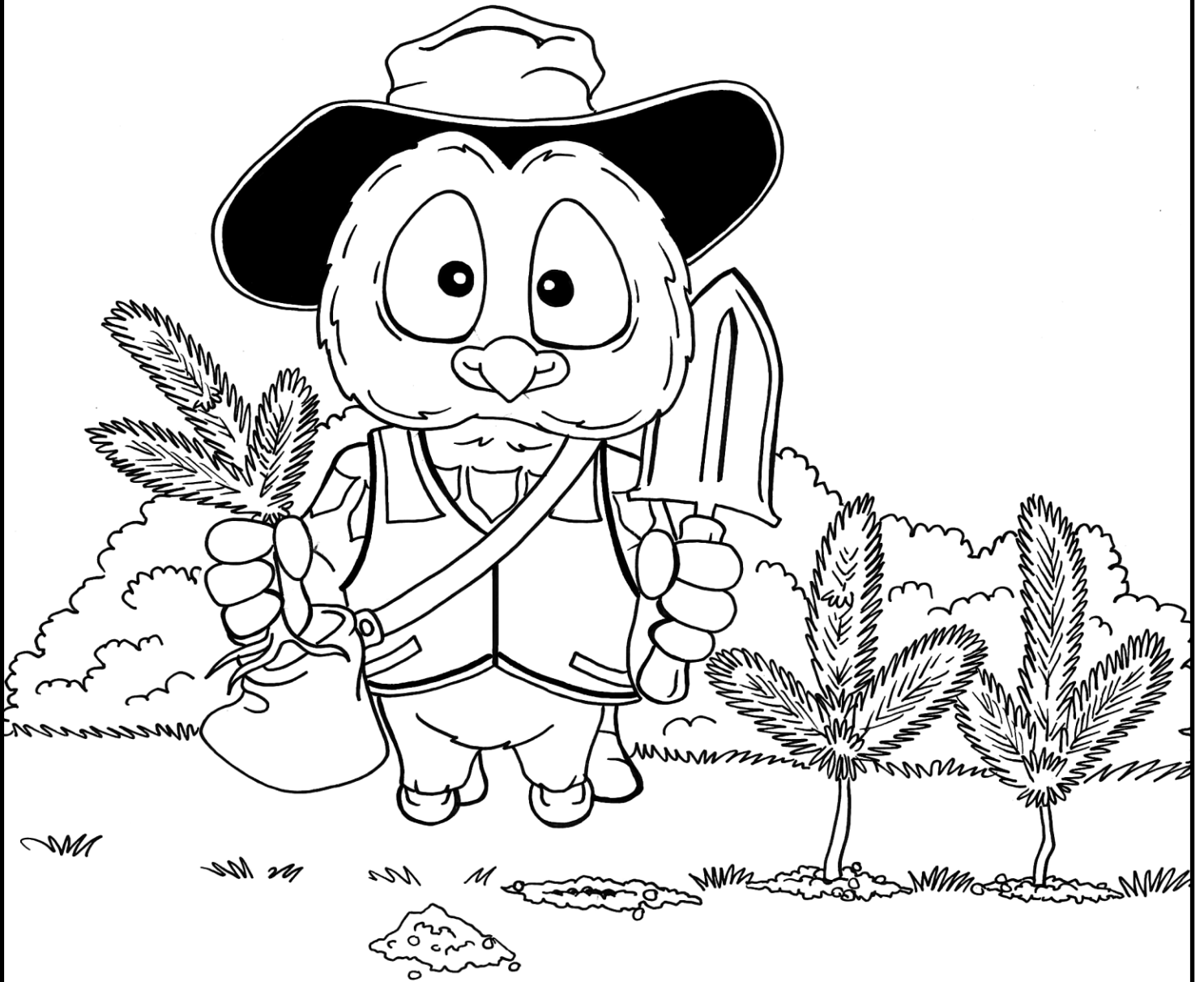
When trees are cut down, they are hauled to a processing facility. Most trees in BC are made into lumber, plywood and paper. Have you ever thought about what else can be made from a tree? Every bit of a tree is used to make 1,000's of items. Here is a list of a few items made from trees. Find these words in the word search puzzle.



LIPSTICK
TOOTHPASTE
MAPLE SYRUP
SAUSAGE
PAPER
HAIRSPRAY
VINEGAR
PENCIL
BATTERIES
ASPRIN



TREE-PLANTING



It is law in BC to replant after logging. Ollie must plant 2 - 3 young trees called seedlings for each tree cut down. Sometimes trees grow back naturally by seeds from fallen cones. In 2013, over 7 billion trees were planted in BC.

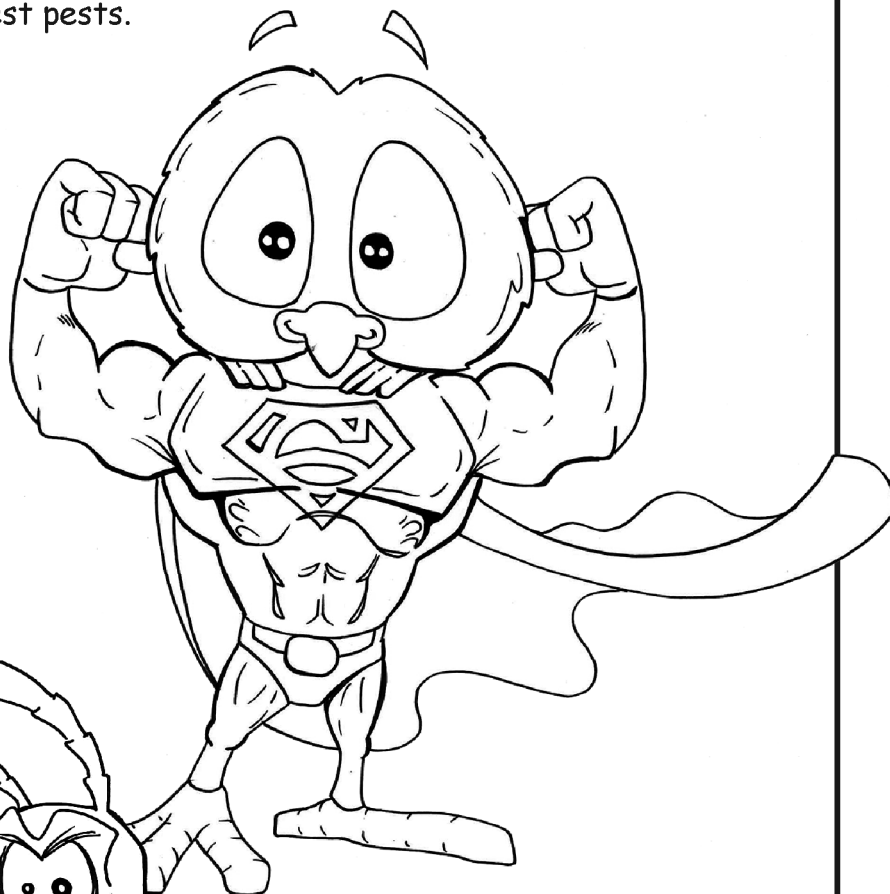
TENDING THE FOREST



Ollie has an important job looking after replanted areas to ensure the forest is re-established. Once the seedlings are healthy and strong, they are left to grow on their own.

FOREST HEALTH

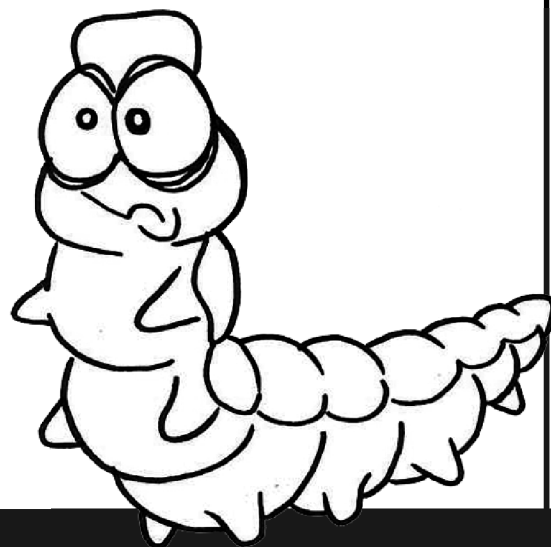
As Ollie's home is the forest, he regularly checks and protects the forest for diseases such as root rot and mistletoe and forest pests.



TIM THE TUSSOCK MOTH
WANTED FOR: eating needles

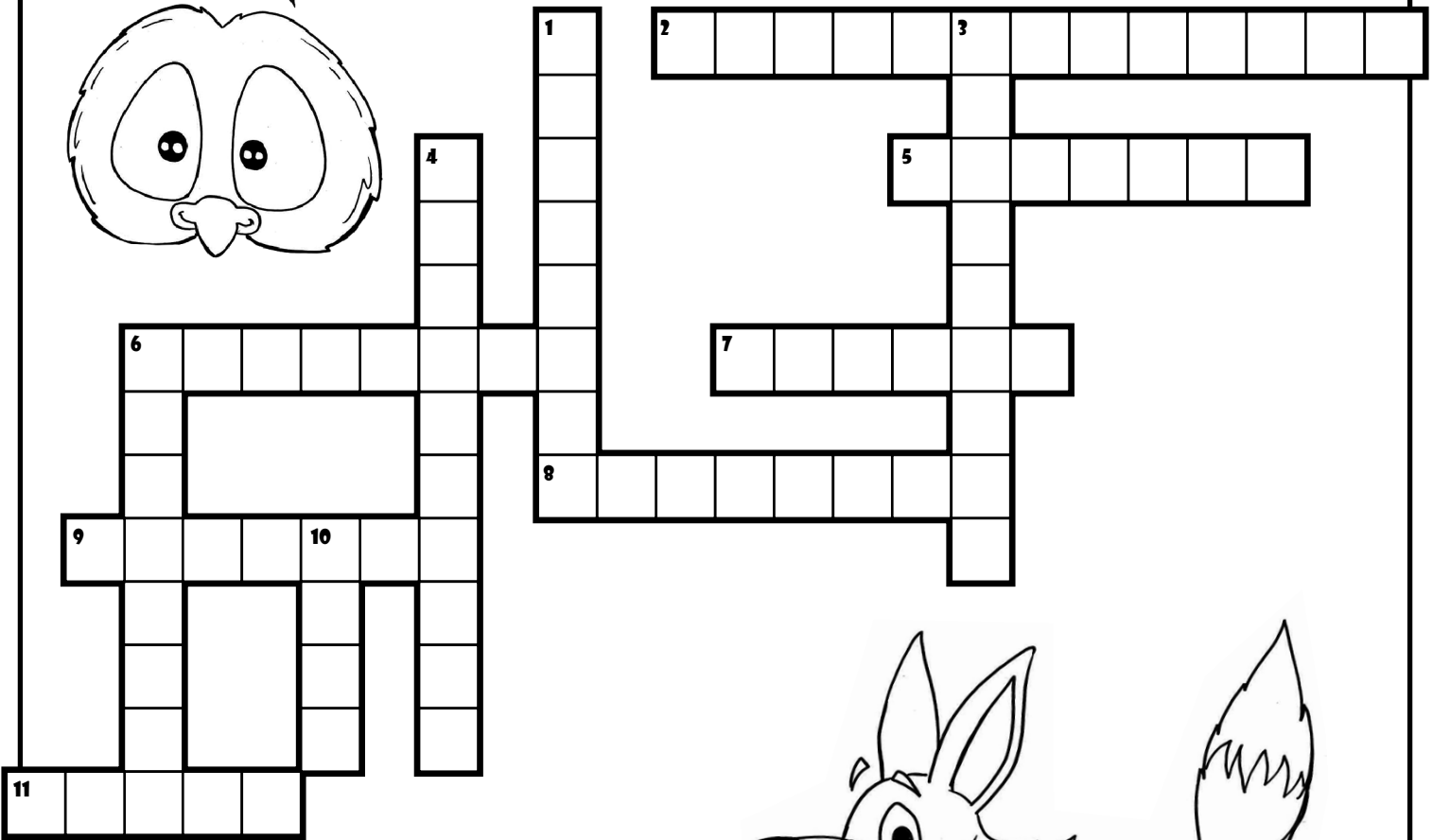


BARB THE MOUNTAIN PINE BEETLE
WANTED FOR: making tunnels
under the bark where she lays eggs



SID THE SPRUCE BUD WORM
WANTED FOR: destructively
defoliating coniferous forests

CROSSWORD PUZZLE



ACROSS

- 2. - to establish a new forest
- 5. - type of licence to manage public forest land
- 6. - land reserved for special use such as habitat
- 7. - a plant community mostly made up of trees and other plants growing alongside an animal community
- 8. - animals in a natural environment
- 9. - a natural place where plants and animals live
- 11. - the age of a tree can be determined by counting these



DOWN

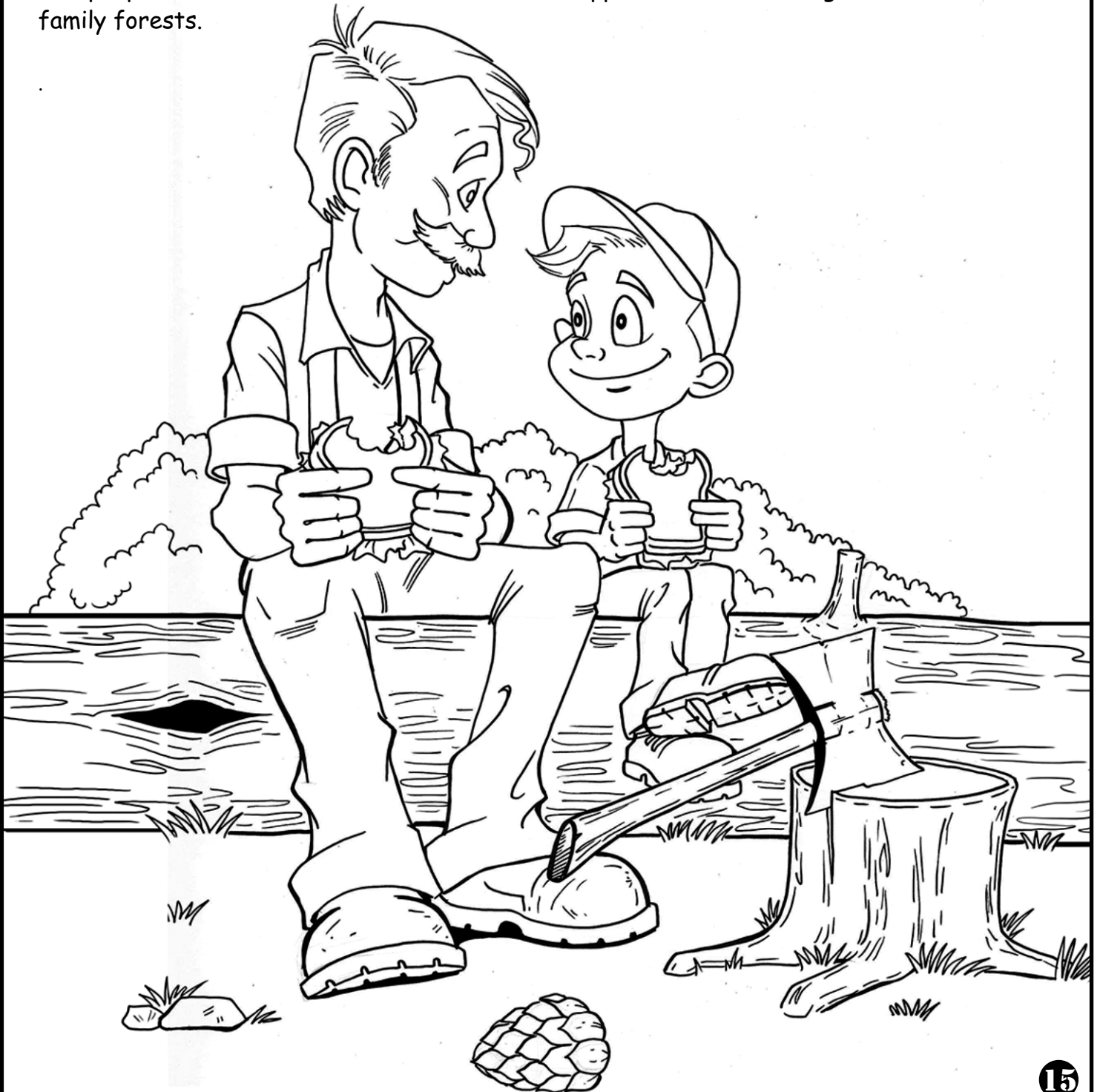
- 1. - a power tool to cut down trees
- 3. - a system of soil, water and air which supports communities of plants and animals
- 4. - cutting down trees, also called logging
- 6. - area next to a creek, stream or river
- 10. - logpole pine and douglas firs are a type of

WOODLOT LICENCE

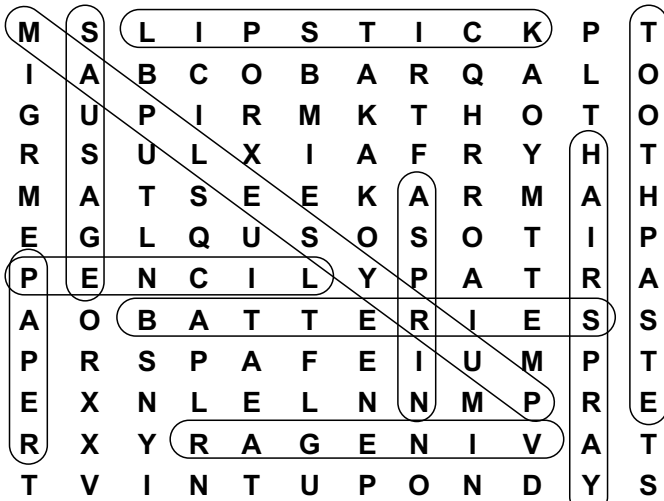
The smallest plot of managed public forest where trees are harvested in BC is a Woodlot Licence. There are more than 870 around BC and many are located next to towns, highways and sensitive ecosystems.

There are also Woodlots in BC which are privately owned forests.

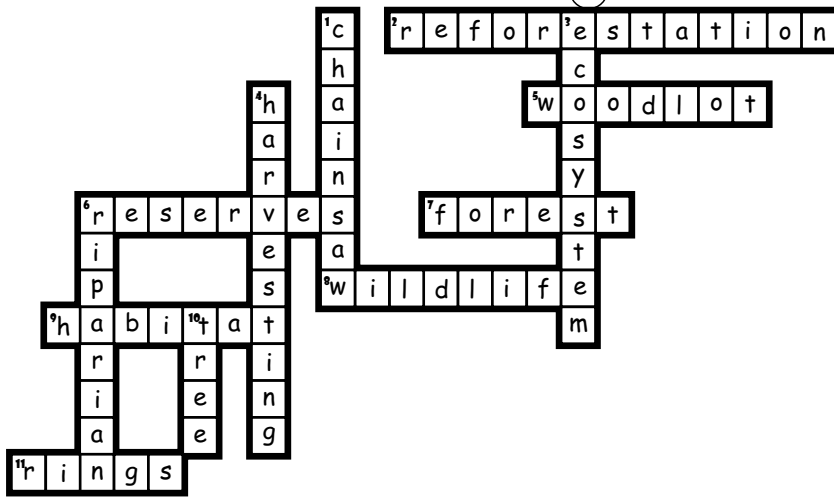
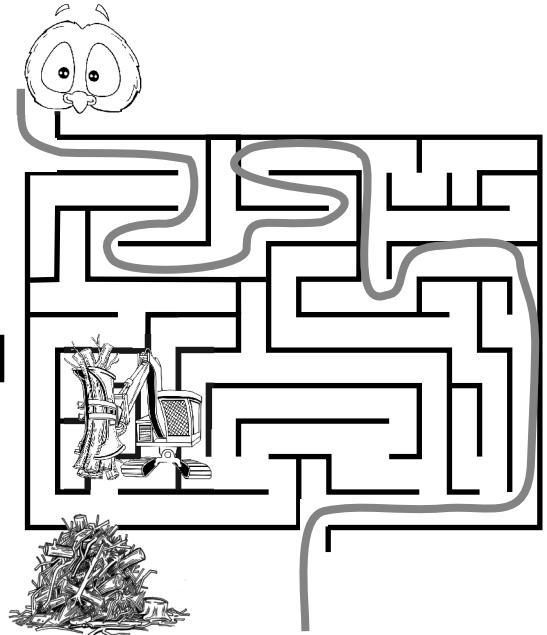
The people who look after them take a hands-on approach and are thought of as BC's family forests.



ANSWER KEY



Q: What happens when you put a nail in a tree?
A: It will stay in the same spot and not get any higher off the ground when the tree grows.



The Federation of BC Woodlot Associations (FBCWA) represents the economic and social interests of woodlot licensees, private forest landowners, and others involved in small-scale forest management in BC.

The mission of FBCWA members is to practice exemplary forest and natural resource management in a socially, economically, and environmentally responsible manner.

To learn more about BC woodlots and woodlot licences, visit www.woodlot.bc.ca

Contact: Federation of BC Woodlot Associations
E-mail: gen_manager@woodlot.bc.ca

Credits:

"Ollie's Woodlot Adventures"

Content & Design: Lisa Marak, FBCWA
Inspiration: Canadian Women in Timber and "Splinter"
Illustrations & Layout: Lyle Doucette, Electric Paper Company



